

Wire-to-board connectors

# LEKconnector

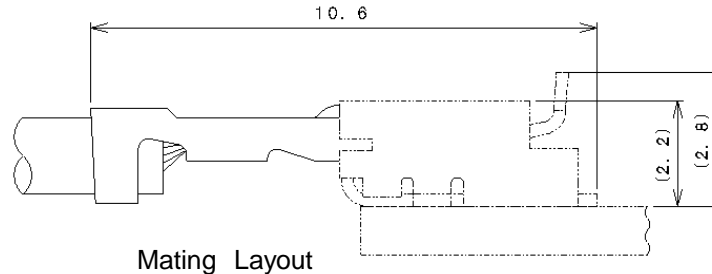
This LEK connector is wire-to-board connector that does not use the housing and has a positive lock. This enables to absorb misalignment when mating connector.

■ Feature

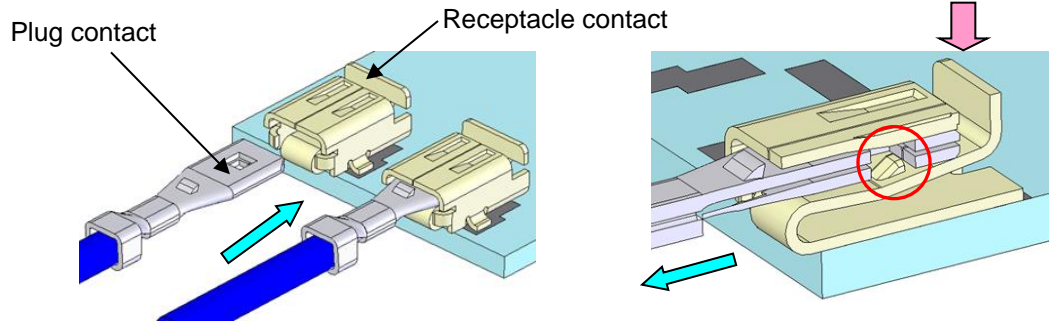
● Secure locking structure

■ Specifications

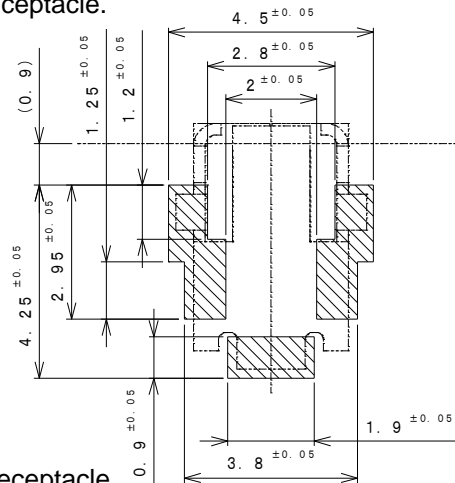
- Current rating : 3A(AC/DC)
- Temperature range : -55°C~+85°C  
(including temperature rise in applying electrical current)
- Contact resistance : Initial value : 20mΩMax  
After environmental testing : 30mΩMax
- Part number : SLEKH-001T-P0.6  
: LEK-01RS-2RPT-TL
- Applicable wire : AWG #22~#26



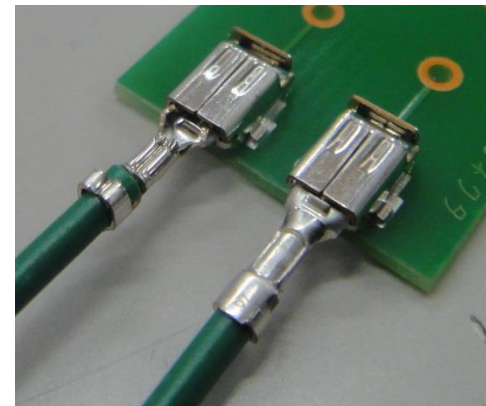
PATENT PENDING



Connector can be pulled out with unlocking the dimple when pushing the lock lever of receptacle.



Receptacle Recommended pattern layout



Mating/unmating at both sides enables.